

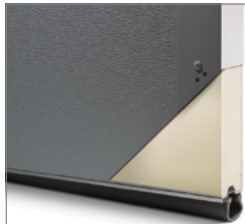


Shown in mahogany.

#### Colors<sup>1</sup>



#### Insulation

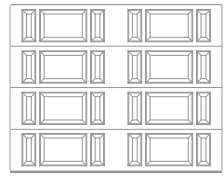


Polyurethane Insulation  
R-value<sup>2</sup>

**R-16.95**

# 2701 FIBERGLASS

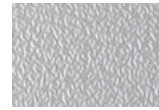
COMBO PANEL | POLYURETHANE INSULATION | R-VALUE<sup>2</sup> R-16.95



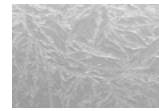
#### Glass<sup>3</sup>



Plain



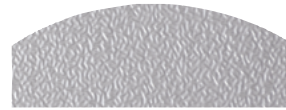
Obscure



Glue Chip



Long Arched Plain



Long Arched Obscure



Long Arched Glue Chip

#### Designer Glass<sup>4</sup>



Somerset (brass caming)



Somerset (platinum caming)



Monticello (brass caming)



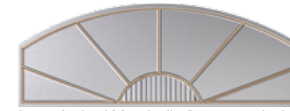
Monticello (platinum caming)



Long Arched Somerset (brass caming)



Long Arched Somerset (platinum caming)



Long Arched Monticello (brass caming)



Long Arched Monticello (platinum caming)

<sup>1</sup> Refer to your local C.H.I. dealer for exact color match. <sup>2</sup> R-value testing is in accordance with ASTM C518 standards. <sup>3</sup> All glass is either transparent or semi-transparent. <sup>4</sup> Designer glass uses an acrylic face with brass or platinum caming and an obscure back.

## APPEARANCE + LIFETIME PACKAGE

Upgrade lifetime protection plan to your garage door and its hardware. That not only sounds great but looks good too.



## C.H.I. HASSLE-FREE WARRANTY

C.H.I. has a reputation for manufacturing quality garage doors, so it's only fitting that our hassle-free warranty outperforms all others.

Your Local Garage Door Professional

▶ Learn more at [www.chiohd.com/2701](http://www.chiohd.com/2701)