

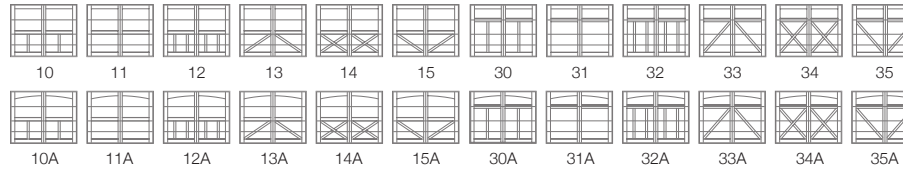


5331A shown in white with optional arched madison window design and spade hardware.

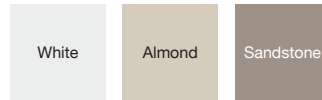
# 5300 STEEL OVERLAY CARRIAGE

Strength and design come together to carefully craft our 5300 steel overlay carriage garage door. Shaped from steel and embossed with a natural wood grain finish, this exceptional collection sets the stage for the rest of your home.

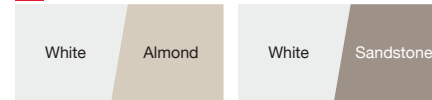
## CARRIAGE HOUSE DESIGNS



## COLORS<sup>1</sup>



## 2-TONE COLORS<sup>1</sup>



<sup>1</sup> Refer to your local C.H.I. Dealer for exact color match.

## WINDOW DESIGNS

### Single Row



Stockton



2-2 Piece Arched Stockton



4 Piece Arched Stockton



Madison



2-2 Piece Arched Madison



4 Piece Arched Madison

### Double Row



Stockton



2-2 Piece Arched Stockton



4 Piece Arched Stockton



Madison



2-2 Piece Arched Madison



4 Piece Arched Madison

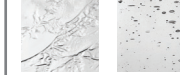
## GLASS



Plain Frosted



Tinted Obscure



Glue Chip Seeded

*Plain is available as polycarbonate.*

## EXTERIOR HARDWARE

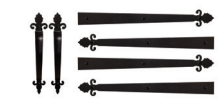
### Permanent



Spade



Wrought Iron



Barcelona 1



Barcelona 2

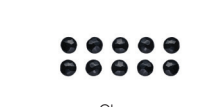
### Magnetic



Spade



Ashford



Clavos

## SPECIFICATIONS

<b>Insulation Type</b>	1-13/16" Polystyrene
<b>R-value</b>	R-16.55
<b>Backing</b>	Steel
<b>Construction Type</b>	Heavy Duty
<b>Wind Load</b>	Non Impact and Impact Rated
<b>Warranty</b>	Limited Lifetime on sections 3 Years on Overlays 3 Years on Springs 6 Years on Hardware
<b>Extended Coverage</b>	Appearance and Lifetime Package



Your Local Garage Door Professional

chiohd.com

1485 Sunrise Drive | Arthur, IL 61911 | USA

